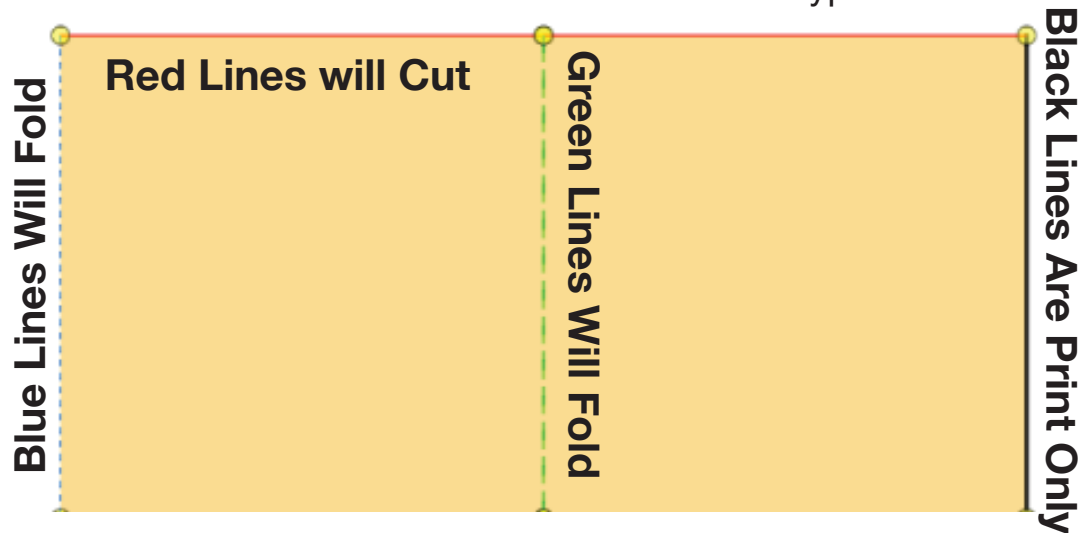


FABMaker Tool Tips

Cut Lines, Fold Lines, and Tabs

Fab@School Maker Studio includes four types of lines:



Line Segments can be Changed With the Cut Fold Tab Tool



Cut Fold Tab lets you change line segments.



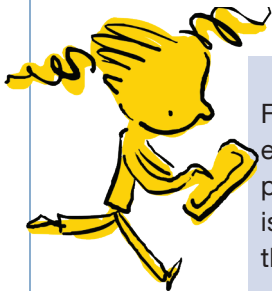
Cut Line (RED): Select a line segment and then select the Cut button. The line turns red and is cut when sent to the digital fabricator. If the line is already a cut line, cut will toggle off and the line will turn BLACK.



Mountain Fold Line (BLUE): Select a line segment and then select the Mountain Fold button. The line is perforated when sent to the Silhouette.



Valley Fold Line (GREEN): Select a line segment and then select the Valley Fold button. The line is perforated when sent to the Silhouette.



DID YOU KNOW?

Fab@School makes it easy to add tabs to your project. Once your project is fabricated, apply glue to the tab for easy assembly.



Tab: Select a line segment and then select the Tab button to add a tab. The base of the tab will be a fold line, and the perimeter will cut. If there's already a tab, selecting the Tab button will remove the tab. Customize the size and shape of a tab by dragging the markers at the top and base.

